

Barrow Value Opportunity Fund (BALIX)

Using our private equity perspective, we seek high quality, attractively valued companies of all sizes. As a result, the Fund's holdings have often had a higher return on assets and operating margins with a lower valuation compared to large, mid and small cap stocks.

(203) 391-6100

barrowfunds.com

info@barrowfunds.com

Barrow Market Radar

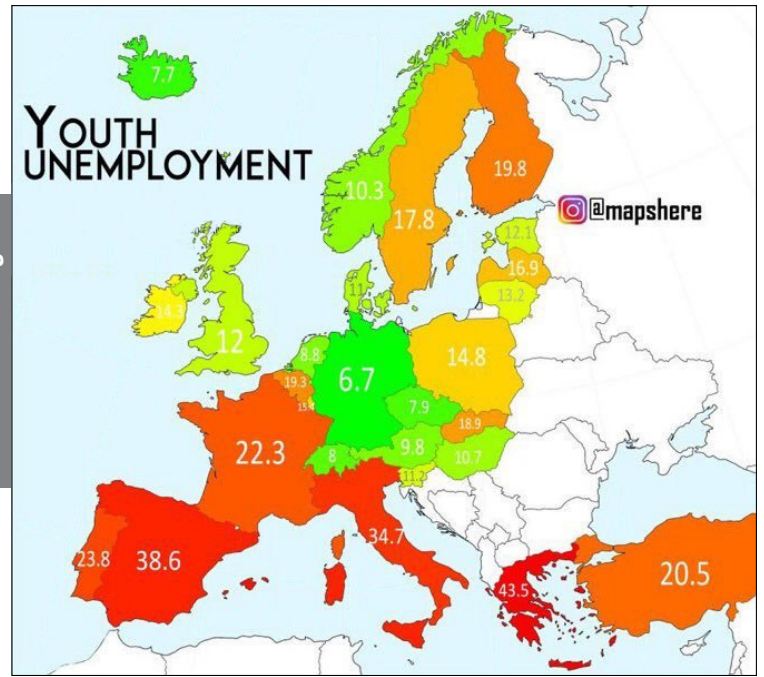
- [Lehman's Long Shadow](#) Source: bloomberg.com
- [What to Expect From Central Banks](#) Source: nasdaq.com
- [The Urban Heat Effect](#) Source: insideclimatenews.org

When you click on links above, you are leaving the Barrow Funds website.

BARROW DASHBOARD

September 2018

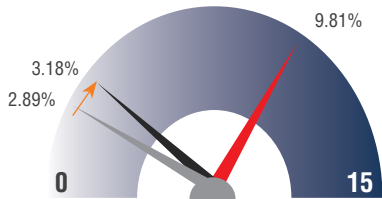
Food For Thought



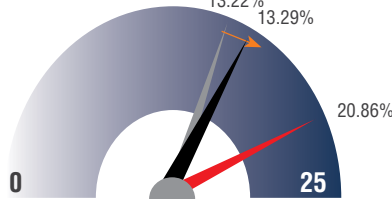
Source: OECD. The youth unemployment rate is the # of unemployed 15-24 year olds expressed as a % of the youth labour force. Unemployed people are those who report that they are without work; that they are available for work and that they have taken active steps to find work in the last 4 weeks.

Barrow Market Meters

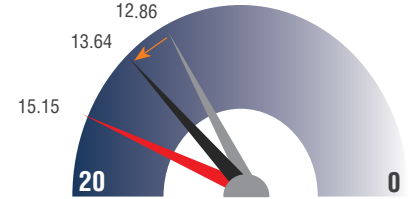
Large Cap ROA (S&P 500)



Large Cap Operating Margins (S&P 500)



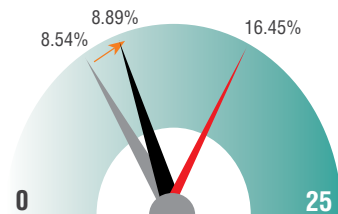
Large Cap EV/EBITDA (S&P 500)



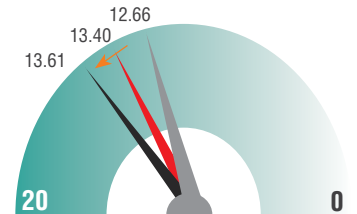
Mid Cap ROA (S&P 400)



Mid Cap Operating Margins (S&P 400)



Mid Cap EV/EBITDA (S&P 400)



Small Cap ROA (Russell 2000)



Small Cap Operating Margins (Russell 2000)



Small Cap EV/EBITDA (Russell 2000)



Source: Barrow Funds and Bloomberg

■ Barrow Value Opp. Fund (BALIX) - Current (as of 8/31/18) ■ Benchmark - Current (as of 8/31/18) ■ Benchmark - One Year Ago (as of 8/31/17)

(continued)



“...and if anyone here suspects that the algorithm that put these two together might be flawed, speak now...”

Performance (As of June 30, 2018)*

	Average Annualized Total Returns				
	YTD	1 Year	3 Year	5 Year	Since Inception*
Barrow Value Opportunity Fund	2.42%	11.59%	6.44%	9.72%	14.38%
S&P 500 Index	2.65	14.37	11.93	13.42	14.71
Russell 2500 Value	3.00	11.49	9.76	10.78	14.19

**Net Expense Ratio: 1.16%; Gross Expense Ratio: 1.57%

*12/31/08. Performance data quoted represents past performance; past performance does not guarantee future results. The investment return and principal value of an investment will fluctuate so that an investor's shares, when redeemed may be worth less than the original cost. Current performance of the Fund may be lower or higher than the performance quoted. Performance data current to the most recent month end is available by calling 877-767-6633. This fact sheet is for educational purposes only and should not constitute investment advice.

The returns of the Fund shown for periods prior to its inception date are the returns of the predecessor, the Barrow Street Fund LP, an unregistered limited partnership managed by the portfolio managers of the Barrow Value Opportunity Fund (the "Predecessor Private Fund"). The Predecessor Private Fund was reorganized into Institutional Class shares on August 30, 2013 the date that the Value Opportunity Fund commenced operations. The Value Opportunity Fund has been managed in the same style and general strategy and by the same portfolio managers since the Predecessor Private Fund's inception on December 31, 2008.

**Barrow Street Advisors LLC (the "Adviser") has contractually agreed, until October 1, 2018, to waive Management Fees and reimburse Other Expenses to the extent necessary to limit total annual fund operating expenses (exclusive of brokerage fees and commissions, taxes, borrowing costs such as interest and dividend expenses on securities sold short, Acquired Fund fees and expenses, and other expenses) to an amount not exceeding 1.15% of average daily net assets. Management Fee waivers and expense reimbursements by the Adviser are subject to repayment by the Value Opportunity Fund for a period of three years after such fees and expenses were incurred, provided that the repayments do not cause Total Annual Fund Operating Expenses to exceed the foregoing expense limitations. Prior to October 1, 2018 this agreement may not be modified or terminated without the approval of the Board of Trustees. This agreement will terminate automatically if the Value Opportunity Fund's investment advisory agreement with the Adviser is terminated.

Mutual fund investing involves risk. Principal loss is possible. The Fund's investment objectives, risks, charges and expenses must be considered carefully before investing. The prospectus contains this and other important information about the Fund and may be obtained by calling 1-877-767-6633. Read it carefully before investing. Distributed by Ultimus Fund Distributors, LLC.

The Value Opportunity Fund's investment goals, policies, guidelines and restrictions are, in all material respects, equivalent to the Predecessor Private Fund's investment goals, policies, guidelines and restrictions. The information shows the Predecessor Private Fund's annual returns and long-term performance reflecting the actual fees and expenses that were charged when the Value Opportunity Fund was a limited partnership. The prior performance is net of management fees and other expenses but does not include the effect of the performance fee which was in place until October 7, 2012. From its inception on December 31, 2008 through the date of this prospectus the Predecessor Private Fund was not subject to certain investment restrictions, diversification requirements and other restrictions of the Investment Company Act of 1940 as amended (the "1940 Act") or Subchapter M of the Internal Revenue Code of 1986 as amended, which, if they had been applicable, might have adversely affected the Value Opportunity Fund's performance.

The top 10 holdings for the Barrow Value Opportunity Fund as of June 30, 2018 are Sanderson Farms, 1.20%; Turning Point Brands, 1.20%; Simply Good Food, 1.19%; Edgewell Personal Care, 1.19%; Ingredion, 1.17%; Vector Group, 1.17%; Energizer Holdings, 1.17%; Pilgrim's Pride, 1.17%; Herbalife, 1.15%; Usana Health Sciences, 1.14%. Fund holdings and sector allocations are subject to change at any time and should not be considered recommendations to buy or sell any security.

The **S&P 500 Index** is representative of large cap and is an unmanaged index of equity prices and is representative of a broader market and range of securities than is found in the Fund's portfolio. The **S&P 400 Index** is representative of mid cap and is a stock market index from S&P Dow Jones Indices. The index serves as a barometer for the U.S. mid-cap equities sector and is the most widely followed mid-cap index. The **Russell 2000 Index** is representative of small cap and is a small-cap stock market index of the bottom 2,000 stocks in the Russell 3000 Index. Investors cannot invest directly in an index. The **Russell 2500 Value Index** measures the performance of the small to mid-cap value segment of the U.S. equity universe. It includes those Russell 2500 companies considered more value-oriented relative to the overall market as defined by Russell's leading style methodology. **Return on Assets** is an indicator of how profitable a company is relative to its total assets. Calculated by dividing a company's annual earnings by its total assets. **Operating Margin** is a measurement of what proportion of a company's revenue is left over after paying for variable costs of production such as wages, raw materials, etc. **EV or Enterprise Value** is an economic measure reflecting the market value of a business. **EBITDA** is earnings before interest, taxes, depreciation and amortization and is an indicator of a company's financial performance.